

# DENBIGH TOWN & AREA PLAN

“LOOKING FORWARD TOGETHER”

2013 – 2020

March 2014



# DENBIGH TOWN PLAN

“LOOKING FORWARD TOGETHER”

2012 – 2020

Revised August 2013

## Introduction

Denbighshire County Council has adopted a strategic aim of being “a high performing council close to the community”.

To help achieve this aim, the County Council is inviting the town and community councils and the businesses, community and voluntary sectors in each of its main towns and the smaller outlying communities which relate to them to join together to develop “town plans”. These will be living documents which will be subject to regular reviews and will set out

- the current situation in the towns
- the key challenges and opportunities which they will face over the next decade
- a vision for each town which will provide it with a sustainable future, and
- realistic and achievable actions which will deliver that vision.

Denbigh, the third largest town in the county is a medieval market town, steeped in history and dominated by the castle built during the reign of Edward I. The original town walls are still in place apart from a 100 yard stretch. Denbigh was given its borough charter in the 13<sup>th</sup> century and it remained a borough until 1974. The town, which prospered during Tudor times, (one of the most prosperous in Wales) today boasts over 200 listed buildings. The older parts of the town have close knit narrow streets, some grand medieval merchants' houses and many terraced houses, which retain the sense of the medieval town plan. Much of the town is now designated a Conservation Area. The High Street with its 16th century county hall (now the library) has an interesting mixture of shops and public houses. Gwasg Gee in Chapel Street was the oldest printing works in Wales until it closed in 2001, and played an important part in the history, politics and culture of Wales. Denbigh is also the birthplace of many important and well known figures such as H M Stanley, Elizabeth Casson, Thomas and Hugh Myddelton and Twm o'r Nant.

In the 19th century, the North Wales Hospital was built on the outskirts of the town; it was the town's largest employer until it closed in 1995. The main hospital closed in the 1990's with the closure of the Gwynfryn facility following in 2002. The in-patient services which were previously provided at the Hospital were re-located elsewhere. The livestock mart also left the town in 1992 when the new facility was opened on the outskirts of Ruthin and the site which was vacated became the food store that is now Morrison's. Unfortunately, the economic consequences of these closures have not yet been addressed. The Colomendy Industrial Estate which was developed in the latter part of the 20th century is the county's largest general industrial site and has provided new types of employment for the area. Major employers on the Estate included Craig Bragdy who are specialists in ceramic murals for architectural settings and swimming pools, Niagara Health Care Ltd who make massage systems built into beds and chairs, and Telsol who manufacture boluses used in the treatment of livestock.

1. See Appendix 1 – Urban Characterisation Study of Denbigh



The town has two state schools providing secondary education - Denbigh High School and St Brigid's, which also provides primary education. Denbigh College, a Coleg Llandrillo campus provides further education and bilingual learning facilities for the town and its surrounding areas. Ysgol Plas Brondyffryn is a regional school specialising in the education of children on the autistic spectrum from the age of 3 – 19; it also provides residential facilities at Gwynfryn. There are five state primary schools, including Ysgol Frongoch, Ysgol Pendref, St Brigid's, Ysgol y Parc and Twm o'r Nant - which provides education through the medium of Welsh. Housing growth during the second half of the 20th century has been primarily focussed in lower Denbigh.

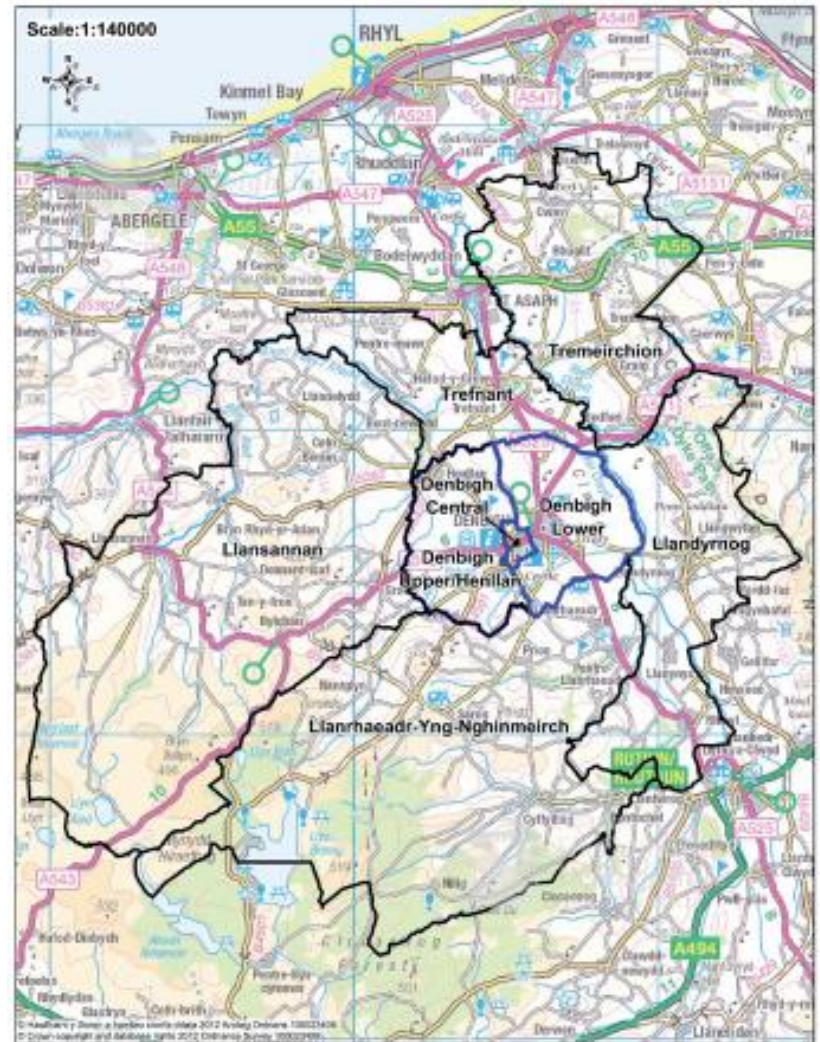
It has a community hospital, the oldest in Wales and a good choice of doctor and dentist practices. It has a leisure centre with a swimming pool, an all weather pitch, fitness suite and dance studio. Lower Park provides tennis courts, a bowling green, a children's park and a skate park. It boasts a voluntary-run theatre, Theatr Twm o'r Nant which is also home to a successful Film Club. Also voluntary-run is Eirianfa, a community centre which is close to the town's main car parks.

There is a Business Group which organises festivals, markets and other events; the Midsummer Festival Committee organises an annual week-long Festival during June and the Round Table organises an annual successful Beer Festival in September. On Boxing Day, the Rotary Club organises an annual 'Roll the Barrel competition' which follows the meeting of the Denbighshire Hunt in the High Street. Denbigh participates in the annual Open Doors heritage weekends and Helfa Gelf, both in September.

The Town Council is also very active; it organises heritage lectures, town guides and an annual Firework display at the castle. The council also provides grant aid funding in excess of £40,000 per annum for community clubs and groups to apply.

### The population of the town of Denbigh is 9,848

The town serves a wider rural hinterland and is surrounded by the Llandyrnog, Llanrhaeadr yng Nghinmeirch and Tremeirchion, Cwm & Waen and Trefnant wards in Denbighshire and the Llansannan ward in Conwy County Borough. These wards together with the community of Henllan are the home to a further 10,005 people.



Wards in the Denbigh area



## Where we are now

(The actual figures are shown in the Statistical Appendix.)

### People

Compared to the county as a whole, the town of Denbigh has

- fewer people aged over 65,
- the same percentage of over 85's,
- more young people under 15,
- fewer households claiming housing or Council Tax benefit except in part of the Denbigh Upper & Henllan ward where the percentage is twice the county average,
- fewer households claiming Disability Living Allowance except in the Denbigh Central and Denbigh Upper & Henllan wards, and
- the same proportion of households are overcrowded except in part of the Denbigh Upper & Henllan ward where the percentage is more than twice the county average.

### Community

Compared to the county as a whole, more people in the town of Denbigh

- have been born in Wales, and
- can speak Welsh

In the town as a whole, the crime rate is average or, in the case of Denbigh Lower ward, below average; however in the Central ward incidences of 'Violence against the Person' and 'Criminal Damage' are higher.

There is a strong ethos of community enterprise in the town which has enabled the provision of facilities by voluntary and community groups, for example, Theatr Twm o'r Nant, where they have not been provided by the public sector.

The Welsh Government uses a formula to measure deprivation called the "Welsh Index of Multiple Deprivation". Wales is split into 1896 areas some of which are smaller than County Council wards which are called "Lower Super Output Areas". Each area is then ranked with the most deprived given a score of 1 and the least deprived as score of 1896. The scores in different years are not directly comparable because the way in which the index is calculated changes over time. In the 2011 edition of the Index, part of the Denbigh Upper & Henllan ward has moved up to be amongst the 10% most deprived areas in Wales and as such potentially qualifies for assistance through the Communities First programme.

Part of the index which relates to how easy it is for people to access services such as schools, clinics, shops and leisure centres and the Llanrhaeadr yng Nghinmeirch, Llansannan, Trefnant and Tremeirchion, Cwm & Waen wards are considered to be amongst the 10% most deprived in Wales in this regard with the Llandyrnog ward being in the 20% most deprived.



Map showing the Lower Super Output Areas in Denbigh

## Jobs

Compared to the county as a whole,  
(2. Appendix 2 (Statistical Appendix))

- more people who live in Denbigh work in the public sector (and more people in Denbighshire work in this sector than in any other local authority area in Great Britain)
- fewer people work in retail
- the same percentage of people work in manufacturing (which is lower than in Wales as a whole)
- fewer residents of the town commute more than 20km to work
- fewer people commute more than 20km to work in the town, and
- the same percentage of people of working age claim Job Seekers' Allowance.

Annual household incomes in the Denbigh Lower ward are much higher than the average for Wales with those in the rest of the town being lower than average.

2. Appendix 2 (Statistical Appendix)

## The place

Denbigh has one of the highest percentages of vacant town centre units in the county although this is still broadly similar to the average level for the UK.

### Vacancy rates for town centre premises – November 2013

Denbigh	10.8%	(12 units)
UK	13.9%	(Local Data Company)

The principal attraction in the town currently is the castle which had 13,500 visitors in 2012.

The number of bed spaces in graded visitor accommodation in the town has increased from 8 to 31 over the last couple of years.

## Future challenges and opportunities

### People

A development to enable the conservation of the historic buildings at the former North Wales Hospital could potentially provide new homes and employment opportunities on the site.

Cymdeithas Tai Clwyd has bought the former Autoworld site on Smithfield Road site with the intention of providing new homes for young people. This is an opportunity to provide new community and enterprise facilities for young people to complement the proposed housing development.

The former school site in Middle Lane is no longer in use and could be redeveloped; it is owned and administered by a charity.

### Community

Part of the Denbigh Upper & Henllan ward is now amongst the 10% most deprived areas in Wales and potentially qualifies for assistance through the Communities First programme. There is already a dedicated community development worker for the area and a food co-operative is operating from the Margaret Morris Centre.

The Co-operative store is willing to allow community uses on the upper floors of their shop in High Street.

Bryn Parc, a popular recreational area adjoining Denbigh Castle is in private ownership and is leased to Denbighshire County Council. The lease expires in 2017.

There are many successful sports clubs such as: rugby, football, tennis, bowling, boxing, hockey, golf and cricket (the second oldest in Wales, est 1844). The cricket club is looking to re-locate. The golf and rugby club have entertainments facilities and the rugby club was the first to install solar panels for energy reduction.

The County Council closed its museum in the town's library in 2004; there are over 1,000 items pertaining to Denbigh in store in Ruthin; the North Wales Hospital Group has a huge collection which is of interest to all those interested in the study of mental health. There are H M Stanley artifacts which were bought with a grant from the HLF at the Stanley auction at Christies in 2002; one of the conditions of this grant was that they be on view to the public in an accredited museum. There is a Denbigh Museum Registered Company limited by guarantee which is seeking to re-open the museum at alternative premises within the town. On the outskirts there is Cae Dai museum celebrating the 50s and in the Welsh Language Centre there is the Wireless in Wales museum.

## Jobs

There is very little easily accessible employment land left to develop at Colomendy Industrial Estate limiting both the expansion of current businesses on the estate and the industrial estate itself.

Businesses in the town can access fast broadband services through connections to the Fibrespeed optical fibre link which runs along the A55.

Station Yard site in lower Denbigh is a large area suitable for re-development.

The shops which currently make such an important contribution to the way the town centre looks and feels continue to face strong competition; shopping via the internet and out of town stores are challenges to be addressed as are the high business rates. Negative perceptions of town centre parking are a deterrent to attract customers.

## Place

The principal attraction in the town is the castle which is under the control of CADW. Unlike other Denbighshire towns, the County Council does not own or run any heritage or cultural assets in Denbigh, apart from the library.

The appearance of the streetscape in the town centre has been significantly improved as a result of the Townscape Heritage Initiative. Nevertheless, there are still some prominent historic buildings in the town centre which are unused or derelict such as Gwasg Gee, the former cinema, the Crown Hotel, the Church Institute and 102 Vale Street.

There is a need to consider the gas, electricity and water infrastructure when developing areas in the town.

The town's car parks are untidy, especially the multi-storey car park; this needs a regular inspection and maintenance.

There is a lack of coach parking in town; the County Council is obliged to provide this as a condition of sale of the former Smithfield site in 1997. The Magistrates' Court formerly Frongoch primary school is for sale and could go some way towards answering this need.

In 2011 CADW invested at Denbigh Castle with the building of a new visitor centre, improved interpretation and longer opening hours. However, signage at the entrance to the town, within the town centre and around the castle is limited; the physical links between the town centre and castle are not obvious. Access to the town walls should be made easier.

NO2 pollution levels are high in Lenten Pool, and also on Vale Street.



## Vision for Denbigh

We want Denbigh

- to be the main centre of employment and retailing in the Vale of Clwyd
- to realise the tourism potential by increasing the number of visitors to the castle and town walls and other attractions
- to be the gateway to Hiraethog, and Llyn Brenig centre
- to have an attractive and viable town centre
- to re-open the museum
- to improve and create new cycle routes
- to offer a great quality of life to residents
- to have support for its strong community connections and the high levels of usage of the Welsh language

Making it happen...  
for people

What we want to achieve	We will achieve this by	This will be led by	By when	Status
There has been an improvement in educational attainment	Reviewing primary school provision in upper Denbigh	County Council Modernising Education	1 year	Complete
	Implementing the actions arising from the review of primary school provision in upper Denbigh	County Council Modernising Education	1 – 5 years	
	Reviewing remaining primary provision within Denbigh and the adjoining communities	County Council Modernising Education	1 – 5 years	
	Secure capital funding for improvements to primary and secondary Schools	County Council Modernising Education	5 – 10 years	
The housing needs of residents have been met	Potentially providing housing to enable the conservation of the historic buildings at the former North Wales Hospital a Grade 1 Listed Building	Private sector	1 – 5 years	
	Youth Enterprise Centre on the former Autoworld Site will be completed by 2014	Cymdeithas Tai Clwyd	1 – 5 years	
	Considering making the site of the former Denbigh Grammar School on Middle Lane available for a housing development to meet the needs of older people	County Council Housing & Community Development	1 – 5 years	
	Include Station yard and the Wool factory as possibility for houses, employment, visitor accommodation...	County Council Housing & Community Development	1 – 5 years	
People will have greater access to cheaper and better quality food	Providing more allotments and supporting the establishment of an Allotment User Association.	County Council Finance & Assets	1 – 5 years	Was found to not be required
Places for families to socialise together	Providing family focused activities and establishments	County Council Housing & Community Development	1 – 5 years	
		County Council Leisure, Libraries & Community Development		
		Business Group		

**Making it happen...**  
for the community

What we want to achieve	We will achieve this by	This will be led by	By when	Status
More resources to tackle the causes of deprivation in part of the Denbigh Upper & Henllan ward	Upper Denbigh is now part of the Communities First Programme.	Upper Denbigh Community Partnership	1 year	
People have a better appreciation of their town's history by being able to access collections held locally	Implementing the recommendations of the museum feasibility study	Denbigh Museums Group/DTC	1 – 5 years	
There will continue to be a high percentage of the town's population who speak Welsh	Improving facilities at the town's Welsh primary school by replacing mobile classrooms with permanent buildings	County Council Modernising Education	1 – 5 years	
The town's community facilities will be better and more sustainable;	Supporting the improvement of the facilities at Denbigh Town Football Club, the Tennis and Bowls Clubs, the lower park pavilion and Cricket Club.	County Council Leisure, Libraries & Community Development / Pavilion Group	1 – 5 years	
	Support the boxing club in its relocation from Middle Lane			
	Re-establish public toilets in Lower / Middle Park	County Council Environment & Lower Park Association	1 – 5 years	
	Improve the interior of the town hall and market hall	County Council Leisure, Libraries & Community Development	1 – 5 years	
	Providing a permanent building for the Margaret Morris Centre	County Council Modernising Education	1 – 5 years	
	Providing new facilities for young people to complement the housing development proposed for the former Autoworld site in Smithfield Road	County Council Leisure, Libraries & Community Development and Cymdeithas Tai Clwyd	1 – 5 years	
	Providing more flexible public transport for people living in outlying communities to make it easier for them to access the facilities in the town	County Council Highways & Transportation	1 – 5 years	
More social integration between education facilities	Providing integrated activities between the schools including Plas Brondyffryn, and Denbigh College	Denbigh High School, Howell's School, St Brigid's School	1 year	

Making it happen...  
for jobs

What we want to achieve	We will achieve this by	This will be led by	By when	Status
A wider choice of jobs will be available in Denbigh itself	Maximising the regeneration benefits of the redevelopment of Station Yard	Private Sector	1 year	
	Allocating easily accessible land for development at the Colomendy Industrial Estate	County Council Planning & Public Protection	5 – 10 years	
It will be possible to commute safely and sustainably to jobs which are available elsewhere	Looking into the feasibility of providing a north-south cycle path in the Vale of Clwyd	County Council Highways and Transportation	1 year	
	Looking into the feasibility of providing a lower carbon public transport link to main employment sites in the area and Rhyl railway station	County Council Highways and Transportation	1 – 5 years	
	Promoting the use of empty shop units	County Council Housing & Community Development	1 year	
The businesses which provide employment in the town centre will be more sustainable	Improving the market and support events would be of benefit to the town centre	County Council Housing & Community Development/Events/Community Facilities/Business Group/Tourism Group	1 -5 years	
	Supporting liaison with the Former Howells School to maximize the future economic benefit to the town and to safeguard the listed buildings.	Business Group/ County Council Housing & Community Development	1 – 5 years	
More visitors will come to the castle and walls and will spend money in the town	Improving access to the castle and town walls	Denbigh Tourism Group/DCC Tourism & Heritage	1 year	
	Carrying out small scale improvements to the signage and access arrangements for the castle and town walls	County Council Housing & Community Development	1 – 5 years	
There will be more graded accommodation to enable visitors to stay overnight and spend money in the town	Holding information workshops for potential B&B operators	County Council Housing & Community Development	1 – 5 years	
Unused but otherwise sound buildings such as the former Church Institute will be brought back into use for the benefit of the town centre	Being flexible about the uses allowed	County Council Housing & Community Development/Private	1 – 5 years	

Making it happen...  
for the place

What we want to achieve	We will achieve this by	This will be led by	By when	Status
Buildings in the town will look more attractive	Providing financial support to town centre businesses that want to smarten up the outside of their premises	County Council Environment	1 year	
	Getting prominent untidy sites and buildings such as Gwasg Gee, the Crown Hotel, the former cinema in Highgate, 102 Vale Street and the former North Wales Hospital back into use through enforcement action if necessary	County Council Planning & Public Protection	1 – 5 years	
The town's public realm will look more attractive.	Tidying the area around the water feature near Factory Ward car park. Cleaning up the principal routes used by visitors such as Rosemary Lane and Broomhill Lane. Providing a litter bin near the college and monitoring on street cleansing service.	County Council Environment	1 year	
	Reviewing the provision of benches including style and number	County Council Environment	1 – 5 years	
	Removing time expired temporary notices from lamp posts and telegraph poles	County Council, Highways & Transportation, and Planning & Public Protection	1 year	
The air quality in Lenten Pool and on Vale Street will have improved	Monitoring NO2 levels and looking into how they could be reduced	County Council Planning & Public Protection	1 – 5 years	
Visitors to the town will have a better experience	Investigate the possibility of funded Town Centre Manager.	County Council Housing & Community Development and Town Council		
	Rationalising and improving signs in Factory Ward car park and removing all out of date signs	County Council Highways & Transportation	1 year	
	Improving the location of visitor signs in Factory Ward car park. Providing interpretation of water feature near Factory Ward car park. Interpreting the story of Rosemary Lane.	County Council Housing & Community Development	1 – 5 years	
	Need to co-ordinate and improve the CCTV with the aim of linking up to the county's centre in Rhyl	County Council Planning & Public Protection		
	Need signage from the A55	County Council Highways & Transportation		

All pedestrians will be able to move safely around the town	Improve access around the town by widening paths and dropping kerbs where required????			
Traffic will be able to circulate freely and safely	Looking into the feasibility of off street parking on Barker's Well Lane, improving the road junction at St Mary's, better bus stops in the town centre so buses can pull in and won't hold up the traffic, signage for alternative routes to town centre Improve the bus terminals in their current position in Lenten Pool	County Council Highways & Transportation	5 – 10 years	
There will be a better offer for visitors including the development of new attractions and walks	Looking into the feasibility of developing the Chapel Street area into a cultural quarter based on the two chapels, Victorian school room, Gwasg Gee, and Tŷ Thomas Gee and making more of the link between Beatrix Potter and Gwaenynog Hall and accommodating coach parties	County Council Housing & Community Development	1 – 5 years	
	Accommodating coach parties	County Council Housing & Community Development/Denbigh Museum Company	1 – 5 years	



# DENBIGH AREA PLAN

“LOOKING FORWARD  
TOGETHER”

2013 – 2020

# The links between the town & the associated communities

Denbigh and its surrounding communities are closely linked with Denbigh town centre which serves the majority of villages in the area. The area around Denbigh is large and home to a large agricultural economy and population.

The area is becoming increasingly popular for holding high quality, high profile events such as the Tour of Britain cycle event and the National Eisteddfod. The area offers a wealth of outdoor activities such as walking, horseriding, cycling, golf as well as educational opportunities such as the Duke of Edinburgh awards.

There are several active community councils and groups in the area all working towards the well being of their local communities and economies. The communities covered by this Area Plan include Bodfari, Henllan, Nantglyn, Prion, Saron, Aberwheeler, Llangwylfan, Llandyrnog and Llanrhaeadr.





Making it happen...  
For People & Community

ACTIVITY	ECON. AMB. STRAT. REF.	OUTPUT	LED BY	START	FINISH
Upgrade the Coco Rooms in Llandrynog, which require external and internal repairs, and provide Wi-Fi access for community use to encourage computer skills and web training.	5.2c	Repairs and work required for WiFi identified	Llandrynog Community Council	May 2014	May 2014
		Funding identified and secured	Llandrynog Community Council	June 2014	Aug 2014
		Repairs carried out	Llandrynog Community Council	Sept 2014	Nov 2014
		WiFi installed	Llandrynog Community Council	Nov 2014	Dec 2014
Improvements to Llandrynog Sports Pavilion	5.2c	Costings identified	Llandrynog Community Council	Feb 2014	Mar2014
		Funding identified and secured	Llandrynog Community Council	Mar 2014	Apr 2014
		Improvement works complete	Llandrynog Community Council	Apr 2014	Jul 2014
Build a new community building at Top Park, Henllan to include Healthy Activity Schemes	5.2c	Costings identified	Henllan Community Council	June 204	July 2014
		Funding identified and secured	Henllan Community Council	July 2014	Sept 2014
		Community building built	Henllan Community Council	Oct 2014	Aug 2015
Review bus timetable /community bus scheme in light of bus grant cuts – across the rural area around Denbigh but particularly between Denbigh and Henllan	5.2c	Issue raised with Highways	DCC Economic and Business Development	May 2014	May 2014
		Actions determined by outcome of discussion with Highways	DCC Highways	June 2014	June 2014
Provide a community centre in Nantglyn.	5.2c	Options determined for providing a community centre – new build, use of existing building,	Nantglyn Community Council	June 2014	July 2014

		repair/refurbishment of existing building			
		Preferred option determined	Nantglyn Community Council	Aug 2014	Aug 2014
		Funding identified and secured	Nantglyn Community Council	Aug 2014	Oct 2014
		New community centre available	Nantglyn Community Council	Oct 2014	Dependent on chosen option
Provide more burial space in Nantglyn.	5.2c	Options for providing more burial space determined	Nantglyn Community Council	May 2014	June 2014
		Preferred option determined	Nantglyn Community Council	July 2014	Aug 2014
		Funding identified and secured	Nantglyn Community Council	Aug 2014	Oct 2014
		Burial space available	Nantglyn Community Council	Nov 2014	Jan 2015
Upgrade Cae Nant playing field in Llandrynog and improve the safety between the play area and the parking area by resurfacing the parking area	5.2c	Improvements identified	Llandrynog Community Council	Apr 2014	May 2014
		Funding identified and secured	Llandrynog Community Council	June 2014	Aug 2014
		Upgrade carried out	Llandrynog Community Council	Sept 2014	Oct 2014
Upgrade the playing field in Aberwheeler. Including the replacement of the barbed wire fencing with D shaped rails and plain wire	5.2c	Improvements identified	Aberwheeler Community Council	Apr 2014	May 2014
		Funding identified and secured	Aberwheeler Community Council	June 2014	Aug 2014
		Upgrade carried out	Aberwheeler Community Council	Sept 2014	Oct 2014
Start the proposal of building a new community centre in Aberwheeler to replace the community meeting facility when the chapel closes.	5.2c	Options determined for providing a community centre – new build, use of existing building, repair/refurbishment of existing building	Aberwheeler Community Council	June 2014	July 2014
		Preferred option determined	Aberwheeler Community Council	Jul 2014	Aug 2014
		Funding identified and secured	Aberwheeler Community Council	Aug 2014	Oct 2014
		New community centre available	Aberwheeler Community Council	Oct 2014	Jul 2015
Continue with the upkeep of the Henllan park which DCC Housing have recently invested in	5.2c	Issue raised with Housing Services	DCC Economic and Business Development	April 2014	May 2014
		Maintenance schedule established	DCC Housing Services	May 2014	June 2014

Provide space to improve parking for walkers and improve parking situation in Aberwheeler.	3.1A-a	Parking area identified	Aberwheeler Community Council	May 2014	June 2014
		Necessary permissions gained	Aberwheeler Community Council	May 2014	June 2014
		Funding identified and secured	Aberwheeler Community Council	June 2014	Aug 2014
		Parking space available	Aberwheeler Community Council	Sept 2014	Nov 2014
Introduce a 30mph limit through Llanrhaeadr		Meet with Community Council	DCC Highways	May 2014	May 2014
		Business case	DCC Highways	June 2014	July 2014
		Implement the reduced speed limits (subject to business case)	DCC Highways	Aug 2014	Dec 2014
Reduce the speed limit on the Nantglyn to Waen road to 30mph		Meet with Community Council	DCC Highways	May 2014	May 2014
		Business case	DCC Highways	June 2014	July 2014
		Implement the reduced speed limits (subject to business case)	DCC Highways	Aug 2014	Dec 2014
Provide a cycleway / walkway between Henllan & Denbigh - to improve safety and encourage cycling and walking whilst also providing better links to Denbigh	5.2c	Meeting between Community Council and DCC Highways	DCC Highways	May 2014	June 2014
		Engineers Report	DCC Highways	June 2014	July 2014
		Costed design	DCC Highways	July 2014	Sept 2014
		Report/Business case	DCC Highways	Sept 2014	Oct 2014
		Planning and/or other consents secured	DCC Highways	Oct 2014	Dec 2014
		Land acquisition if required	DCC Property Services	Dec 2014	April 2015
		Funding identified & secured	DCC Highways	Mar 2015	June 2015
Improvement/provision of path. (Subject to Business Case).	DCC Highways	July 2015	Sept 2015		
Introduce traffic calming in Llandyrnog and reduce the speed limit to 20mph at the school		Meet with Community Council	DCC Highways	May 2014	May 2014
		Business case	DCC Highways	June 2014	July 2014
		Implement the reduced speed limits (subject to business case)	DCC Highways	Aug 2014	Dec 2014
Provide a footpath on Lon Garn, Henllan to improve pedestrian safety within 30mph area		Meeting between Community Council and DCC Highways	DCC Highways	May 2014	June 2014
		Engineers Report	DCC Highways	June 2014	July 2014
		Costed design	DCC Highways	July 2014	Sept 2014
		Report/Business case	DCC Highways	Sept 2014	Oct 2014

		Planning and/or other consents secured	DCC Highways	Oct 2014	Dec 2014
		Land acquisition if required	DCC Property Services	Dec 2014	April 2015
		Funding identified & secured	DCC Highways	Mar 2015	June 2015
		Improvement/provision of path. (Subject to Business Case).	DCC Highways	July 2015	Sept 2015
Introduce speed calming measures on Lon Garn & Denbigh Street, Henllan, to reduce excessive speeds		Meet with Community Council	DCC Highways	May 2014	May 2014
		Business case	DCC Highways	June 2014	July 2014
		Implement the reduced speed limits (subject to business case)	DCC Highways	Aug 2014	Dec 2014
Look into the feasibility of expanding Ysgol Pant Pastynog	5.2c	Issue to be raised with DCC Modernising Education Team	DCC Economic and Business Development	June 2014	July 2014
		Further action to be determined during review of Denbigh area primary provision.	DCC Modernising Education Team	July 2014	Aug 2014
Repair Aberwheeler Memorial		Repairs assessment carried out	Aberwheeler Community Council	May 2014	June 2014
		Funding identified and secured	Aberwheeler Community Council	June 2014	Aug 2014
		Repairs undertaken	Aberwheeler Community Council	Sept 2014	Oct 2014
Provide new outdoor pavilion/marquee for Aberwheeler sports club		Funding identified and secured	Aberwheeler Sports Club	June 2014	Aug 2014
		Pavilion / marquee provided	Aberwheeler Sports Club	Sept 2014	Sept 2014

**Making it happen...**  
for the place

ACTIVITY	ECON. AMB. STRAT. REF.	OUTPUT	LED BY	START	FINISH
Improve the footpath from Aberwheeler down to the river Wheeler to allow access for all	6.1e	Ownership determined and necessary permissions in place	Aberwheeler Community Council	May 2014	July 2014
		Costs of improvements determined	Aberwheeler Community Council	July 2014	Aug 2014
		Funding identified and secured	Aberwheeler Community Council	Aug 2014	Oct 2014
		Improvements to footpath carried out	Aberwheeler Community Council	Oct 2014	Nov 2014
Carry out a parking review in Ty Coch Street/Church Street/School Street, Henllan	5.1d	Report / Business Case	DCC Highways	June 2014	July 2014
		Funding identified and secured	DCC Highways	July 2014	Sept 2014
		Parking review completed	DCC Highways	Sept 2014	Nov 2014
Improve broad band access and mobile phone coverage to rural area surrounding Ruthin	1.2a	Superfast broadband to all properties	DCC Economic and Business Development	Apr 2014	Dec 2017
Tackle dog fouling problem, particularly in Henllan	6.1e	Report / Business Case	DCC Enforcement	May 2014	June 2014
		Enforcement action identified	DCC Enforcement	June 2014	July 2014
		Dog fouling problem resolved	DCC Enforcement	July 2014	Sept 2014

## Priorities for the Rural Area

Three projects have been prioritised for the rural area:

### 1. Improvements to Llandrynog Sports Pavilion

Work – upgrade the kitchen facilities to allow clubs and groups to continue using the venue  
Amount Requested - £2,000

### 2. Installation of footpath at Aberwheeler

Work – footpath to be installed along the main road from the village towards Geinas to improve pedestrian safety  
Amount Requested - £20,000

### 3. Installation of footpath at Henllan

Work – installation of footpath on Garn Road to improve pedestrian safety  
Amount Requested - £85,000

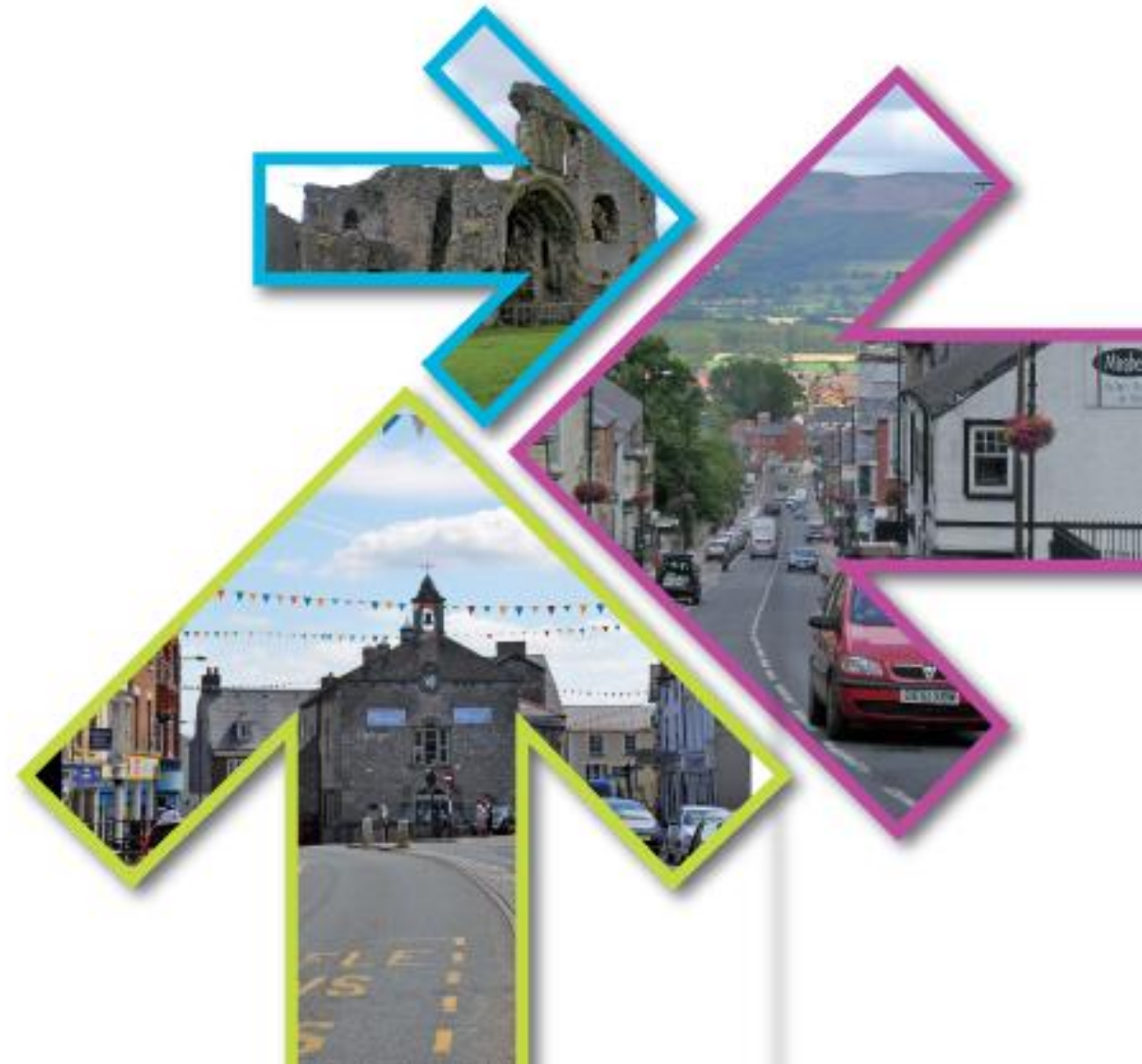
### How will we know if we are on track?

Annual reviews of progress will be undertaken by the County Council together with Denbigh Town Council. More regular updates will also be provided to the County Council's Member Area Groups and to the Town Council, and also to the wider community through County Voice and through press releases made by Denbighshire County Council. The Plan will be treated as a living document in which aspirations can be added or removed according to changes in circumstances.

### Who was involved in the production of this plan?

This plan was produced by Denbighshire County Council following consultations with County Council Councillors and Services, the Town Council, the Business Group, secondary schools and the wider community.

For further information:  
[econ.dev@denbighshire.gov.uk](mailto:econ.dev@denbighshire.gov.uk)



## Appendix 1

### Excerpt from 'Denbigh: Understanding Urban Character' by Cadw

Denbigh is a place of contrasts. There are virtually two towns here — the town within the walls, and the town outside them. Both are medieval in origin, but one went on to enjoy a dynamic and prosperous history whilst the other was left behind. Virtual abandonment of the town within the walls erased the visible traces of the original town outside the walls resulted in a process of continual redevelopment that just as effectively almost obscured its origins. So, whereas the historic nature of Denbigh is immediately apparent, not only in its castle and town walls but also in the visible chronology of its building stock, the full depth of its history is not easily perceived.

It invites, and repays, closer investigation. Denbigh enjoys one of the most striking settings of any Welsh town. From the dramatic apex of its rocky hill, crowned by the remains of its medieval castle and skeletal cathedral, the townscape cascades in dense confusion. With the exception of the market square in front of the shire hall, this is not a town of grand urban gestures. There are no unified terraces of houses to make architectural statements. Instead, Denbigh provides a townscape of small-scale units of development, built both with the contours and across them.

Contrasts of form, scale and materials create a mosaic of visual impressions that compete for attention, and provide an environment that is stimulating and undeniably attractive. Commercial architecture of all periods dominates the High Street, where tight development patterns reflect economic pressures on valuable space. Chapels punctuate the townscape, defying the physical constraints of space with their architectural ambition. The mansions of Vale Street in their generous plots contrast with the small artisan cottages crowded onto narrow lanes. Almost everywhere each plot of land displays a distinctly separate history from its neighbours, and this results in a townscape of unusual variety. It is this rich diversity that provides the defining aspect of Denbigh's character. Through an acknowledgement and understanding of it, we can gain access not only to the exceptional chronology of the town's development but also its complex social and cultural history.

The Townscape Heritage Initiative and Housing Renewal Schemes have already assisted in sustaining the fabric of both gentry houses and terraced cottages, and this breadth is an essential component of good conservation management. But, ultimately, more is needed. The urban fabric is not just the sum of its buildings but also about the pattern of land use, the plot structure and the spatial organization. It is the combination of all of these elements in a unique topographical setting that provides the touchstone for understanding and sustaining Denbigh's distinctive character.



**Appendix 2  
Statistical Appendix  
2011 Census Data**

Percentage of ...	In Denbigh town	In the surrounding rural area	In Denbighshire
Young people aged 15 or under	18.7	18.7	18.1
All people aged 65 or over	17.3	19.6	21.1
People aged 85 or over	2.4	1.8	2.8
People claiming housing or Council Tax benefit	8.4	12.4	9.6
Overcrowded households	3.5	3.1	3.0
People born in Wales	72.4	63.3	58.1
People over 3 years of age who can speak, read or write Welsh	26.2	28.7	18.6
Working residents who travel more than 20km to work	26.9	19.6	18.6
Working residents employed in agriculture	1.7	8.5	2.3
Working residents employed in manufacturing	8.2	14.7	18.2
Working residents employed in retail	3.7	13.8	14.4
Working residents employed in the public sector	41.2	31.2	30.0

“Lower layer super output area”	Ranking in 2005	Ranking in 2008	Ranking in 2011
<b>Town</b>			
Denbigh Central	1049	1030	881
Denbigh Lower 1	1806	1805	1832
Denbigh Lower 2	1654	1702	1767
Denbigh Lower 3	1474	1558	1595
Denbigh Upper & Henllan 1	273	199	160
Denbigh Upper & Henllan 2	912	879	782
<b>Surrounding Area</b>			
Llandyrnog	1428	1301	1384
Llanrhaeadr yng Nghinmeirch	1359	1300	1422
Llansannan	1048	1088	1081
Trefnant	1278	1065	1196
Tremeirchion, Cwm & Waen	1303	1266	1231